

Pro-Series

2024



热装刀柄 SHRINK-FIT
CHUCK

公司简介

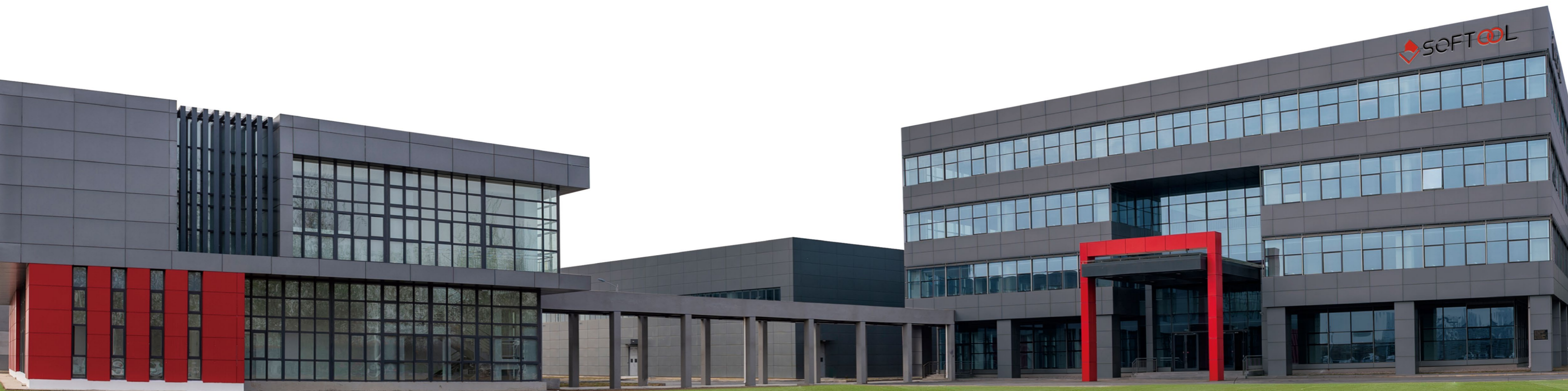
COMPANY
PROFILE

- 百斯图工具隶属于厦门钨业股份有限公司，是一家专注于金属切削刀体的高新技术企业。集产品研发、工艺设计、生产制造、OEM/ODM代工、产品销售为一体的刀体制造企业。

SofTool is a member of Xiamen Tungsten Co., Ltd. It is a high-tech enterprise focusing on metal cutting tool bodies. As a steel product manufacturing enterprise integrating product research and development, process design, manufacturing, OEM/ODM, and product sales.

- 为全球客户专业提供PSC产品、铣刀体、钻杆、镗刀、液压刀柄、热装刀柄、曲轴、型线刀具等产品及个性化专属解决方案，产品应用覆盖了风（核）能发电、模具制造、汽车、工程机械、铁路、石油化工等各个领域。

We provide professional cutter tools and personalized and exclusive solutions for PSC product, milling tool bodies, drilling stem, boring tools, shrink-fit chuck, hydraulic chuck, crank shaft for global customers. Our products are applied in wind (nuclear) power generation, mold manufacturing, automobiles, construction machinery, railways, petrochemicals and other fields.



命名方式 Naming And Coding Rules

PGP	BT40	A	ST	04	090	M
01	02	03	04	05	06	07

01 产品类型 Type	
BGP	通用型 General Purpose
BGC	通用型端面出水 General Purpose & Cool Jet
BSC	通用型安全锁 General Purpose & Safe Lock
BHQ	强力型 High Torque
BDM	模具型 Die & Mold
BHD	强力模具型 High Torque Die & Mold
PGP	Pro 系列通用型 Pro-General

03 法兰类型 Flange Type	
A	自动换刀中心冷却孔 Automatic change tool with center cooling hole
E	自动换刀不带定位键 Automatic change tool without positioning slot

05 夹持孔直径 Diameter	
3	3mm
4	4mm
6	6mm
8	8mm
10	10mm
12	12mm
14	14mm
16	16mm
18	18mm
20	20mm
25	25mm
32	32mm

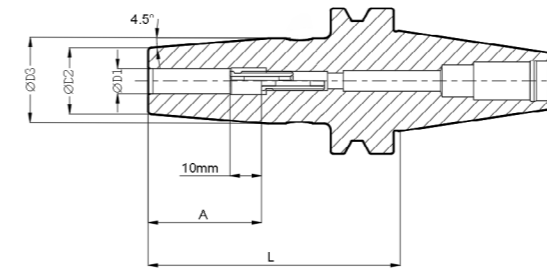
02 接口规格 Coupling Type			
BT	30	HSK	32
	40		40
	50		50
SK	30		63
	40		80
	50		100
		PSC	63

04 刀柄类型 Chuck Type	
HY	液压刀柄 Hydraulic Chuck
ST	热装刀柄 Shrink-fit Chuck

06 有效长度 Length			
60	60mm	100	100mm
65	65mm	105	105mm
70	70mm	115	115mm
80	80mm	120	120mm
85	85mm	130	130mm
90	90mm	160	160mm
95	95mm	200	200mm

07 制式 Format	
M	公制 Metric
I	英制 Inch

BT30A JIS B6339



- 跳动精度 < 0.003mm
- 转速为 25,000rpm 时, 平衡质量等级达到 G2.5 或 Umax < 1 g·mm
- 带轴向长度调节
- Runout < 0.003mm
- Balancing Grade: G2.5 at 25,000 rpm or Umax < 1 g·mm
- With adjustable axial length

> 技术参数 | Technical parameters

单位 | Unit: mm

接口 Coupling	订货号 Ordering code	D1	D2	D3	L	A	过水顶丝 Back up screw	重量 m (kg)
BT30A	PGPBT30AST03060M ¹	3	10	-	60	9.5	-	0.42
BT30A	PGPBT30AST03080M ¹	3	10	-	80	9.5	-	0.45
BT30A	PGPBT30AST04060M ¹	4	10	-	60	12	-	0.42
BT30A	PGPBT30AST04080M ¹	4	10	-	80	12	-	0.45
BT30A	PGPBT30AST06060M	6	23	-	60	36	M5	0.51
BT30A	PGPBT30AST06080M	6	21	27	80	36	M5	0.59
BT30A	PGPBT30AST08060M	8	23	-	60	36	M6	0.49
BT30A	PGPBT30AST08080M	8	21	27	80	36	M6	0.57
BT30A	PGPBT30AST10060M	10	27	-	60	42	M8	0.52
BT30A	PGPBT30AST10080M	10	24	32	80	42	M8	0.63
BT30A	PGPBT30AST12060M	12	27	-	60	47	M8	0.50
BT30A	PGPBT30AST12080M	12	24	32	80	47	M8	0.61
BT30A	PGPBT30AST14065M	14	30	-	65	47	M10	0.56

转下页 see next page →

BT30A JIS B6339

> 技术参数 | Technical parameters

单位 | Unit: mm

接口 Coupling	订货号 Ordering code	D1	D2	D3	L	A	过水顶丝 Back up screw	重量 m (kg)
BT30A	PGPBT30AST14080M	14	27	34	80	47	M10	0.66
BT30A	PGPBT30AST16065M	16	30	-	65	50	M12	0.54
BT30A	PGPBT30AST16080M	16	27	34	80	50	M12	0.64
BT30A	PGPBT30AST18070M	18	35.5	40.5	70	50	M12	0.66
BT30A	PGPBT30AST18090M	18	33	40.5	90	50	M12	0.86
BT30A	PGPBT30AST20070M	20	35.5	40.5	70	52	M12	0.64
BT30A	PGPBT30AST20090M	20	33	40.5	90	52	M12	0.84

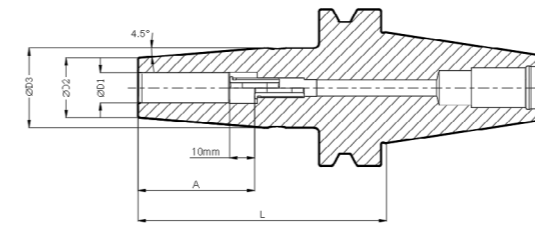
¹ 无过水顶丝，只适用于硬质合金刀具，A尺寸为最小夹持深度

- 刀具柄部公差等级 h6，用于高速钢和硬质合金刀具

¹ Without back up screw, suitable solid carbide tools, A is the minimum clamping depth

- Tolerance class of tool shank: h6, for HSS and solid carbide tools

BT40A JIS B6339



- 跳动精度 < 0.003mm
- 转速为 25,000rpm 时，平衡质量等级达到 G2.5 或 $U_{max} < 1 \text{ g}\cdot\text{mm}$
- 带轴向长度调节

- Runout < 0.003mm
- Balancing Grade: G2.5 at 25,000 rpm or $U_{max} < 1 \text{ g}\cdot\text{mm}$
- With adjustable axial length

> 技术参数 | Technical parameters

单位 | Unit: mm

接口 Coupling	订货号 Ordering code	D1	D2	D3	L	A	过水顶丝 Back up screw	重量 m (kg)
BT40A	PGPBT40AST03090M ¹	3	10	-	90	9.5	-	1.06
BT40A	PGPBT40AST03120M ¹	3	10	-	120	9.5	-	1.15
BT40A	PGPBT40AST03130M ¹	3	10	-	130	9.5	-	1.19
BT40A	PGPBT40AST04090M ¹	4	10	-	90	12	-	1.06
BT40A	PGPBT40AST04120M ¹	4	10	-	120	12	-	1.14
BT40A	PGPBT40AST04130M ¹	4	10	-	130	12	-	1.18
BT40A	PGPBT40AST06090M	6	21	27	90	36	M5	1.20
BT40A	PGPBT40AST06120M	6	21	27	120	36	M5	1.34
BT40A	PGPBT40AST06130M	6	21	27	130	36	M5	1.38
BT40A	PGPBT40AST06160M	6	21	27	160	36	M5	1.60
BT40A	PGPBT40AST06200M	6	21	27	200	36	M5	1.76
BT40A	PGPBT40AST08090M	8	21	27	90	36	M6	1.18
BT40A	PGPBT40AST08120M	8	21	27	120	36	M6	1.32
BT40A	PGPBT40AST08130M	8	21	27	130	36	M6	1.36
BT40A	PGPBT40AST08160M	8	21	27	160	36	M6	1.58
BT40A	PGPBT40AST08200M	8	21	27	200	36	M6	1.74
BT40A	PGPBT40AST10090M	10	24	32	90	42	M8	1.25
BT40A	PGPBT40AST10120M	10	24	32	120	42	M8	1.45
BT40A	PGPBT40AST10130M	10	24	32	130	42	M8	1.51
BT40A	PGPBT40AST10160M	10	24	32	160	42	M8	1.74
BT40A	PGPBT40AST10200M	10	24	32	200	42	M8	1.98
BT40A	PGPBT40AST12090M	12	24	32	90	47	M8	1.23

转下页 see next page →

BT40A JIS B6339

> 技术参数 | Technical parameters

单位 | Unit: mm

接口 Coupling	订货号 Ordering code	D1	D2	D3	L	A	过水顶丝 Back up screw	重量 m (kg)
BT40A	PGPBT40AST12120M	12	24	32	120	47	M8	1.43
BT40A	PGPBT40AST12130M	12	24	32	130	47	M8	1.49
BT40A	PGPBT40AST12160M	12	24	32	160	47	M8	1.72
BT40A	PGPBT40AST12200M	12	24	32	200	47	M8	1.97
BT40A	PGPBT40AST14090M	14	27	34	90	47	M10	1.28
BT40A	PGPBT40AST14120M	14	27	34	120	47	M10	1.50
BT40A	PGPBT40AST14130M	14	27	34	130	47	M10	1.57
BT40A	PGPBT40AST14160M	14	27	34	160	47	M10	1.83
BT40A	PGPBT40AST14200M	14	27	34	200	47	M10	2.10
BT40A	PGPBT40AST16090M	16	27	34	90	50	M12	1.26
BT40A	PGPBT40AST16120M	16	27	34	120	50	M12	1.48
BT40A	PGPBT40AST16130M	16	27	34	130	50	M12	1.55
BT40A	PGPBT40AST16160M	16	27	34	160	50	M12	1.81
BT40A	PGPBT40AST16200M	16	27	34	200	50	M12	2.09
BT40A	PGPBT40AST18090M	18	33	42	90	50	M12	1.40
BT40A	PGPBT40AST18120M	18	33	42	120	50	M12	1.72
BT40A	PGPBT40AST18130M	18	33	42	130	50	M12	1.83
BT40A	PGPBT40AST18160M	18	33	42	160	50	M12	2.15
BT40A	PGPBT40AST18200M	18	33	42	200	50	M12	2.57
BT40A	PGPBT40AST20090M	20	33	42	90	52	M12	1.38
BT40A	PGPBT40AST20120M	20	33	42	120	52	M12	1.70
BT40A	PGPBT40AST20130M	20	33	42	130	52	M12	1.81
BT40A	PGPBT40AST20160M	20	33	42	160	52	M12	2.13
BT40A	PGPBT40AST20200M	20	33	42	200	52	M12	2.55
BT40A	PGPBT40AST25100M	25	44	53	100	58	M16	1.80
BT40A	PGPBT40AST25120M	25	44	53	120	58	M16	2.14
BT40A	PGPBT40AST25130M	25	44	53	130	58	M16	2.31
BT40A	PGPBT40AST25160M	25	44	53	160	58	M16	2.81
BT40A	PGPBT40AST25200M	25	44	53	200	58	M16	3.49
BT40A	PGPBT40AST32100M	32	44	53	100	58	M16	1.65
BT40A	PGPBT40AST32120M	32	44	53	120	58	M16	1.99

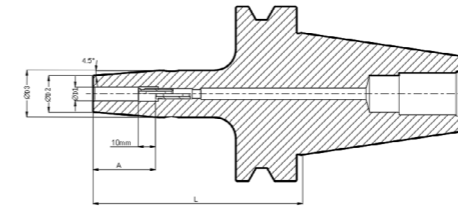
1 无过水顶丝，只适用于硬质合金刀具，A 尺寸为最小夹持深度

• 刀具柄部公差等级 h6，用于高速钢和硬质合金刀具

1 Without back up screw, suitable solid carbide tools, A is the minimum clamping depth

• Tolerance class of tool shank: h6, for HSS and solid carbide tools

BT50A JIS B6339



- 跳动精度 < 0.003mm
- 转速为 25,000rpm 时，平衡质量等级达到 G2.5 或 $U_{max} < 1 \text{ g} \cdot \text{mm}$
- 带轴向长度调节

- Runout < 0.003mm
- Balancing Grade: G2.5 at 25,000 rpm or $U_{max} < 1 \text{ g} \cdot \text{mm}$
- With adjustable axial length

> 技术参数 | Technical parameters

单位 | Unit: mm

接口 Coupling	订货号 Ordering code	D1	D2	D3	L	A	过水顶丝 Back up screw	重量 m (kg)
BT50A	PGPBT50AST06100M	6	21	27	100	36	M5	3.85
BT50A	PGPBT50AST06120M	6	21	27	120	36	M5	3.96
BT50A	PGPBT50AST06130M	6	21	27	130	36	M5	4
BT50A	PGPBT50AST06160M	6	21	27	160	36	M5	4.31
BT50A	PGPBT50AST06200M	6	21	27	200	36	M5	4.48
BT50A	PGPBT50AST08100M	8	21	27	100	36	M6	3.84
BT50A	PGPBT50AST08120M	8	21	27	120	36	M6	3.95
BT50A	PGPBT50AST08130M	8	21	27	130	36	M6	4.00
BT50A	PGPBT50AST08160M	8	21	27	160	36	M6	4.3
BT50A	PGPBT50AST08200M	8	21	27	200	36	M6	4.47
BT50A	PGPBT50AST10100M	10	24	32	100	42	M8	3.91
BT50A	PGPBT50AST10120M	10	24	32	120	42	M8	4.06
BT50A	PGPBT50AST10130M	10	24	32	130	42	M8	4.13
BT50A	PGPBT50AST10160M	10	24	32	160	42	M8	4.4
BT50A	PGPBT50AST10200M	10	24	32	200	42	M8	4.64
BT50A	PGPBT50AST12100M	12	24	32	100	47	M8	3.89
BT50A	PGPBT50AST12120M	12	24	32	120	47	M8	4.04
BT50A	PGPBT50AST12130M	12	24	32	130	47	M8	4.11
BT50A	PGPBT50AST12160M	12	24	32	160	47	M8	4.38
BT50A	PGPBT50AST12200M	12	24	32	200	47	M8	4.63

转下页 see next page →

BT50A JIS B6339

> 技术参数 | Technical parameters

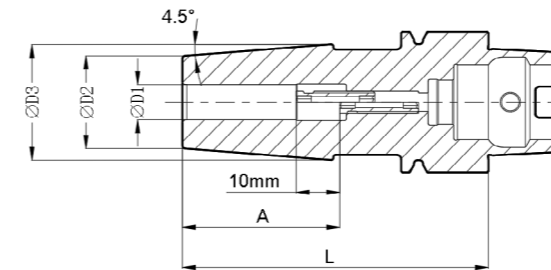
单位 | Unit: mm

接口 Coupling	订货号 Ordering code	D1	D2	D3	L	A	过水顶丝 Back up screw	重量 m (kg)
BT50A	PGPBT50AST14100M	14	27	34	100	47	M10	3.93
BT50A	PGPBT50AST14120M	14	27	34	120	47	M10	4.1
BT50A	PGPBT50AST14130M	14	27	34	130	47	M10	4.15
BT50A	PGPBT50AST14160M	14	27	34	160	47	M10	4.48
BT50A	PGPBT50AST14200M	14	27	34	200	47	M10	4.76
BT50A	PGPBT50AST16100M	16	27	34	100	50	M12	3.91
BT50A	PGPBT50AST16120M	16	27	34	120	50	M12	4.06
BT50A	PGPBT50AST16130M	16	27	34	130	50	M12	4.13
BT50A	PGPBT50AST16160M	16	27	34	160	50	M12	4.45
BT50A	PGPBT50AST16200M	16	27	34	200	50	M12	4.73
BT50A	PGPBT50AST18100M	18	33	42	100	50	M12	4.05
BT50A	PGPBT50AST18120M	18	33	42	120	50	M12	4.3
BT50A	PGPBT50AST18130M	18	33	42	130	50	M12	4.4
BT50A	PGPBT50AST18160M	18	33	42	160	50	M12	4.52
BT50A	PGPBT50AST18200M	18	33	42	200	50	M12	5.26
BT50A	PGPBT50AST20100M	20	33	42	100	52	M12	4.02
BT50A	PGPBT50AST20120M	20	33	42	120	52	M12	4.27
BT50A	PGPBT50AST20130M	20	33	42	130	52	M12	4.37
BT50A	PGPBT50AST20160M	20	33	42	160	52	M12	4.81
BT50A	PGPBT50AST20200M	20	33	42	200	52	M12	5.23
BT50A	PGPBT50AST25100M	25	44	53	100	58	M16	4.27
BT50A	PGPBT50AST25120M	25	44	53	120	58	M16	4.65
BT50A	PGPBT50AST25130M	25	44	53	130	58	M16	4.82
BT50A	PGPBT50AST25160M	25	44	53	160	58	M16	5.43
BT50A	PGPBT50AST25200M	25	44	53	200	58	M16	6.11
BT50A	PGPBT50AST32100M	32	44	53	100	58	M16	4.13
BT50A	PGPBT50AST32120M	32	44	53	120	58	M16	4.5
BT50A	PGPBT50AST32130M	32	44	53	130	58	M16	4.67
BT50A	PGPBT50AST32160M	32	44	53	160	58	M16	5.28
BT50A	PGPBT50AST32200M	32	44	53	200	58	M16	5.96

• 刀具柄部公差等级 h6, 用于高速钢和硬质合金刀具

• Tolerance class of tool shank: h6, for HSS and solid carbide tools

HSK32A DIN 69893



- 跳动精度 < 0.003mm
- 转速为 25,000rpm 时, 平衡质量等级达到 G2.5 或 $U_{max} < 1 \text{ g}\cdot\text{mm}$
- 带轴向长度调节

- Runout < 0.003mm
- Balancing Grade: G2.5 at 25,000 rpm or $U_{max} < 1 \text{ g}\cdot\text{mm}$
- With adjustable axial length

> 技术参数 | Technical parameters

单位 | Unit: mm

接口 Coupling	订货号 Ordering code	D1	D2	D3	L	A	过水顶丝 Back up screw	重量 m (kg)	水嘴 Nozzle
HSK32A	PGPHSK32AST03060M ¹	3	10	-	60	9.5	-	0.15	M10*1
HSK32A	PGPHSK32AST04060M ¹	4	10	-	60	12	-	0.15	M10*1
HSK32A	PGPHSK32AST06070M	6	21	27	70	36	M5	0.29	M10*1
HSK32A	PGPHSK32AST08070M	8	21	27	70	36	M5	0.28	M10*1
HSK32A	PGPHSK32AST10080M	10	24	32	80	42	M8	0.29	M10*1

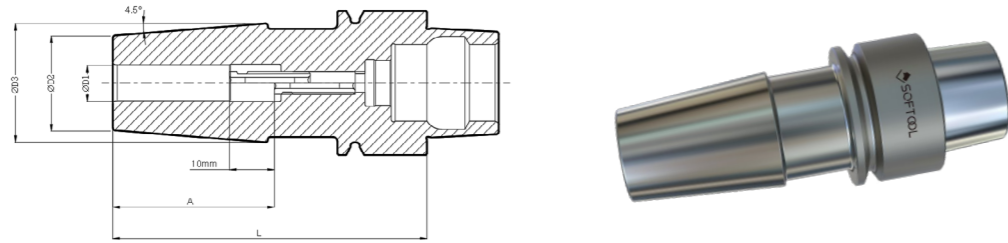
¹ 无过水顶丝, 只适用于硬质合金刀具, A 尺寸为最小夹持深度

- 刀具柄部公差等级 h6, 用于高速钢和硬质合金刀具
- 如需单独订购水嘴, 请参照 29 页

¹ Without back up screw, suitable solid carbide tools, A is the minimum clamping depth

- Tolerance class of tool shank: h6, for HSS and solid carbide tools
- Nozzle need to be ordered seperately, please refer to P29

HSK32E DIN 69893



- 跳动精度 < 0.003mm
- 转速为 25,000rpm 时, 平衡质量等级达到 G2.5 或 $U_{max} < 1 \text{ g}\cdot\text{mm}$
- 带轴向长度调节
- Runout < 0.003mm
- Balancing Grade: G2.5 at 25,000 rpm or $U_{max} < 1 \text{ g}\cdot\text{mm}$
- With adjustable axial length

> 技术参数 | Technical parameters

单位 | Unit: mm

接口 Coupling	订货号 Ordering code	D1	D2	D3	L	A	过水顶丝 Back up screw	重量 m (kg)	水嘴 Nozzle
HSK32E	PGPHSK32EST03060M ¹	3	10	-	60	9.5	-	0.15	M10*1
HSK32E	PGPHSK32EST04060M ¹	4	10	-	60	12	-	0.15	M10*1
HSK32E	PGPHSK32EST06070M	6	21	27	70	36	M5	0.29	M10*1
HSK32E	PGPHSK32EST08070M	8	21	27	70	36	M5	0.29	M10*1
HSK32E	PGPHSK32EST10080M	10	24	32	80	42	M8	0.35	M10*1

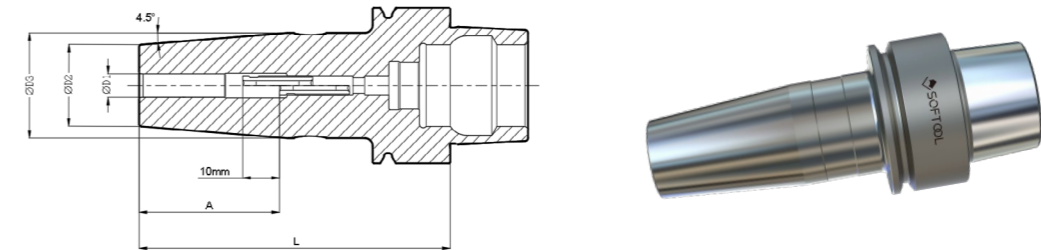
¹ 无过水顶丝, 只适用于硬质合金刀具, A 尺寸为最小夹持深度

- 刀具柄部公差等级 h6, 用于高速钢和硬质合金刀具
- 如需单独订购水嘴, 请参照 29 页

¹ Without back up screw, suitable solid carbide tools, A is the minimum clamping depth

- Tolerance class of tool shank: h6, for HSS and solid carbide tools
- Nozzle need to be ordered seperately, please refer to P29

HSK40E DIN 69893



- 跳动精度 < 0.003mm
- 转速为 25,000rpm 时, 平衡质量等级达到 G2.5 或 $U_{max} < 1 \text{ g}\cdot\text{mm}$
- 带轴向长度调节
- Runout < 0.003mm
- Balancing Grade: G2.5 at 25,000 rpm or $U_{max} < 1 \text{ g}\cdot\text{mm}$
- With adjustable axial length

> 技术参数 | Technical parameters

单位 | Unit: mm

接口 Coupling	订货号 Ordering code	D1	D2	D3	L	A	过水顶丝 Back up screw	重量 m (kg)	水嘴 Nozzle
HSK40E	PGPHSK40EST03060M ¹	3	10	-	60	9.5	-	0.24	M12*1
HSK40E	PGPHSK40EST04060M ¹	4	10	-	60	12	-	0.24	M12*1
HSK40E	PGPHSK40EST06060M ²	6	22.5	28.7	60	36	-	0.33	M12*1
HSK40E	PGPHSK40EST06080M	6	21	27	80	36	M5	0.42	M12*1
HSK40E	PGPHSK40EST08060M ²	8	22.5	28.7	60	36	-	0.33	M12*1
HSK40E	PGPHSK40EST08080M	8	21	27	80	36	M6	0.41	M12*1
HSK40E	PGPHSK40EST10060M ²	10	26.5	32	60	42	-	0.35	M12*1
HSK40E	PGPHSK40EST10080M	10	24	32	80	42	M8	0.46	M12*1
HSK40E	PGPHSK40EST12065M ²	12	26.5	32	65	47	-	0.34	M12*1
HSK40E	PGPHSK40EST12090M	12	24	32	90	47	M8	0.45	M12*1
HSK40E	PGPHSK40EST14070M ²	14	30	33	70	47	-	0.37	M12*1
HSK40E	PGPHSK40EST14090M	14	27	34	90	47	M10	0.49	M12*1
HSK40E	PGPHSK40EST16070M ²	16	30	33	70	50	-	0.35	M12*1
HSK40E	PGPHSK40EST16090M	16	27	34	90	50	M12	0.47	M12*1

¹ 无过水顶丝, 只适用于硬质合金刀具, A 尺寸为最小夹持深度

² 无过水顶丝

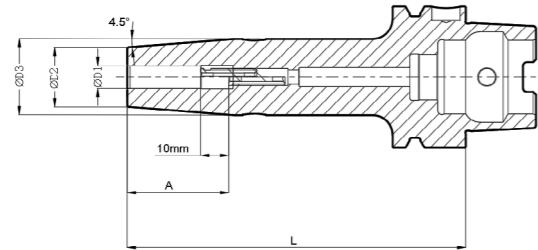
- 刀具柄部公差等级 h6, 用于高速钢和硬质合金刀具
- 如需单独订购水嘴, 请参照 29 页

¹ Without back up screw, suitable solid carbide tools, A is the minimum clamping depth

² Without back up screw

- Tolerance class of tool shank: h6, for HSS and solid carbide tools
- Nozzle need to be ordered seperately, please refer to P29

HSK50A DIN 69893



- 跳动精度 < 0.003mm
- 转速为 25,000rpm 时, 平衡质量等级达到 G2.5 或 $U_{max} < 1 \text{ g}\cdot\text{mm}$
- 带轴向长度调节
- Runout < 0.003mm
- Balancing Grade: G2.5 at 25,000 rpm or $U_{max} < 1 \text{ g}\cdot\text{mm}$
- With adjustable axial length

> 技术参数 | Technical parameters

单位 | Unit: mm

接口 Coupling	订货号 Ordering code	D1	D2	D3	L	A	过水顶丝 Back up screw	重量 m (kg)	水嘴 Nozzle
HSK50A	PGPHSK50AST03060M ¹	3	10	-	60	9.5	-	0.41	M16*1
HSK50A	PGPHSK50AST03120M ¹	3	10	-	120	9.5	-	0.55	M16*1
HSK50A	PGPHSK50AST03130M ¹	3	10	-	130	9.5	-	0.59	M16*1
HSK50A	PGPHSK50AST04060M ¹	4	10	-	60	12	-	0.41	M16*1
HSK50A	PGPHSK50AST04120M ¹	4	10	-	120	12	-	0.55	M16*1
HSK50A	PGPHSK50AST04130M ¹	4	10	-	130	12	-	0.59	M16*1
HSK50A	PGPHSK50AST06080M	6	21	27	80	36	M5	0.57	M16*1
HSK50A	PGPHSK50AST06120M	6	21	27	120	36	M5	0.74	M16*1
HSK50A	PGPHSK50AST06130M	6	21	27	130	36	M5	0.78	M16*1
HSK50A	PGPHSK50AST08080M	8	21	27	80	36	M6	0.56	M16*1
HSK50A	PGPHSK50AST08120M	8	21	27	120	36	M6	0.73	M16*1
HSK50A	PGPHSK50AST08130M	8	21	27	130	36	M6	0.77	M16*1
HSK50A	PGPHSK50AST10085M	10	24	32	85	42	M8	0.64	M16*1
HSK50A	PGPHSK50AST10120M	10	24	32	120	42	M8	0.85	M16*1
HSK50A	PGPHSK50AST10130M	10	24	32	130	42	M8	0.91	M16*1

转下页 see next page →

HSK50A DIN 69893

> 技术参数 | Technical parameters

单位 | Unit: mm

接口 Coupling	订货号 Ordering code	D1	D2	D3	L	A	过水顶丝 Back up screw	重量 m (kg)	水嘴 Nozzle
HSK50A	PGPHSK50AST12090M	12	24	32	90	47	M8	0.65	M16*1
HSK50A	PGPHSK50AST12120M	12	24	32	120	47	M8	0.83	M16*1
HSK50A	PGPHSK50AST12130M	12	24	32	130	47	M8	0.89	M16*1
HSK50A	PGPHSK50AST14090M	14	27	34	90	47	M10	0.70	M16*1
HSK50A	PGPHSK50AST16095M	16	27	34	95	50	M12	0.70	M16*1
HSK50A	PGPHSK50AST16120M	16	27	34	120	50	M12	0.87	M16*1
HSK50A	PGPHSK50AST16130M	16	27	34	130	50	M12	0.94	M16*1

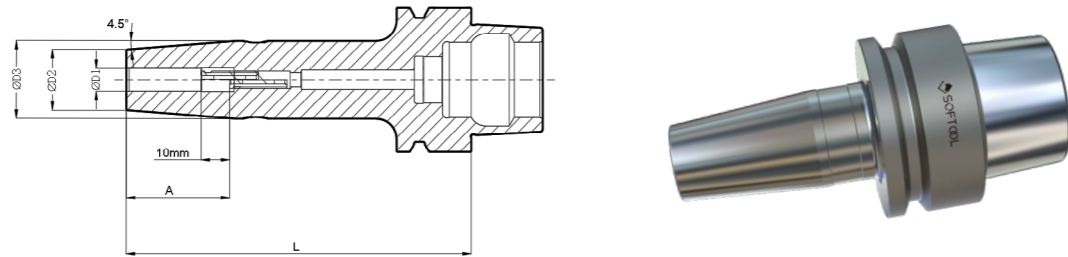
¹ 无过水顶丝, 只适用于硬质合金刀具, A 尺寸为最小夹持深度

- 刀具柄部公差等级 h6, 用于高速钢和硬质合金刀具
- 如需单独订购水嘴, 请参照 29 页

¹ Without back up screw, suitable solid carbide tools, A is the minimum clamping depth

- Tolerance class of tool shank: h6, for HSS and solid carbide tools
- Nozzle need to be ordered separately, please refer to P29

HSK50E DIN 69893



- 跳动精度 < 0.003mm
- 转速为 25,000rpm 时, 平衡质量等级达到 G2.5 或 $U_{max} < 1 \text{ g}\cdot\text{mm}$
- 带轴向长度调节
- Runout < 0.003mm
- Balancing Grade: G2.5 at 25,000 rpm or $U_{max} < 1 \text{ g}\cdot\text{mm}$
- With adjustable axial length

> 技术参数 | Technical parameters

单位 | Unit: mm

接口 Coupling	订货号 Ordering code	D1	D2	D3	L	A	过水顶丝 Back up screw	重量 m (kg)	水嘴 Nozzle
HSK50E	PGPHSK50EST03060M ¹	3	10	-	60	9.5	-	0.43	M16*1
HSK50E	PGPHSK50EST04060M ¹	4	10	-	60	12	-	0.43	M16*1
HSK50E	PGPHSK50EST06080M	6	21	27	80	36	M5	0.60	M16*1
HSK50E	PGPHSK50EST06130M	6	21	27	130	36	M5	0.82	M16*1
HSK50E	PGPHSK50EST08080M	8	21	27	80	36	M6	0.58	M16*1
HSK50E	PGPHSK50EST08130M	8	21	27	130	36	M6	0.80	M16*1
HSK50E	PGPHSK50EST10085M	10	24	32	85	42	M8	0.67	M16*1
HSK50E	PGPHSK50EST10130M	10	24	32	130	42	M8	0.94	M16*1
HSK50E	PGPHSK50EST12090M	12	24	32	90	47	M8	0.68	M16*1
HSK50E	PGPHSK50EST12130M	12	24	32	130	47	M8	0.92	M16*1
HSK50E	PGPHSK50EST14090M	14	27	34	90	47	M10	0.76	M16*1
HSK50E	PGPHSK50EST14130M	14	27	34	130	47	M10	1.00	M16*1
HSK50E	PGPHSK50EST16095M	16	27	34	95	50	M12	0.73	M16*1
HSK50E	PGPHSK50EST16130M	16	27	34	130	50	M12	0.97	M16*1

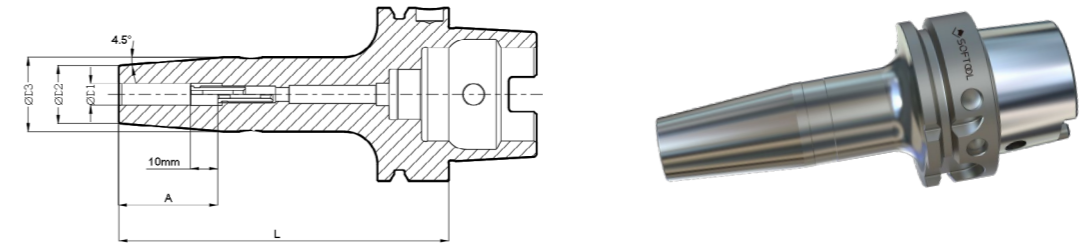
¹ 无过水顶丝, 只适用于硬质合金刀具, A 尺寸为最小夹持深度

- 刀具柄部公差等级 h6, 用于高速钢和硬质合金刀具
- 如需单独订购水嘴, 请参照 29 页

¹ Without back up screw, suitable solid carbide tools, A is the minimum clamping depth

- Tolerance class of tool shank: h6, for HSS and solid carbide tools
- Nozzle need to be ordered separately, please refer to P29

HSK63A DIN 69893



- 跳动精度 < 0.003mm
- 转速为 25,000rpm 时, 平衡质量等级达到 G2.5 或 $U_{max} < 1 \text{ g}\cdot\text{mm}$
- 带轴向长度调节
- Runout < 0.003mm
- Balancing Grade: G2.5 at 25,000 rpm or $U_{max} < 1 \text{ g}\cdot\text{mm}$
- With adjustable axial length

> 技术参数 | Technical parameters

单位 | Unit: mm

接口 Coupling	订货号 Ordering code	D1	D2	D3	L	A	过水顶丝 Back up screw	重量 m (kg)	水嘴 Nozzle
HSK63A	PGPHSK63AST03080M ¹	3	10	-	80	9.5	-	0.69	M18*1
HSK63A	PGPHSK63AST03120M ¹	3	10	-	120	9.5	-	0.80	M18*1
HSK63A	PGPHSK63AST03130M ¹	3	10	-	130	9.5	-	0.84	M18*1
HSK63A	PGPHSK63AST04080M ¹	4	10	-	80	12	-	0.68	M18*1
HSK63A	PGPHSK63AST04120M ¹	4	10	-	120	12	-	0.79	M18*1
HSK63A	PGPHSK63AST04130M ¹	4	10	-	130	12	-	0.83	M18*1
HSK63A	PGPHSK63AST06080M	6	21	27	80	36	M5	0.82	M18*1
HSK63A	PGPHSK63AST06120M	6	21	27	120	36	M5	0.99	M18*1
HSK63A	PGPHSK63AST06130M	6	21	27	130	36	M5	1.03	M18*1
HSK63A	PGPHSK63AST06160M	6	21	27	160	36	M5	1.26	M18*1
HSK63A	PGPHSK63AST06200M	6	21	27	200	36	M5	1.43	M18*1
HSK63A	PGPHSK63AST08080M	8	21	27	80	36	M6	0.81	M18*1
HSK63A	PGPHSK63AST08120M	8	21	27	120	36	M6	0.98	M18*1
HSK63A	PGPHSK63AST08130M	8	21	27	130	36	M6	1.02	M18*1
HSK63A	PGPHSK63AST08160M	8	21	27	160	36	M6	1.25	M18*1
HSK63A	PGPHSK63AST08200M	8	21	27	200	36	M6	1.42	M18*1
HSK63A	PGPHSK63AST10085M	10	24	32	85	42	M8	0.89	M18*1
HSK63A	PGPHSK63AST10120M	10	24	32	120	42	M8	1.12	M18*1
HSK63A	PGPHSK63AST10130M	10	24	32	130	42	M8	1.18	M18*1
HSK63A	PGPHSK63AST10160M	10	24	32	160	42	M8	1.41	M18*1
HSK63A	PGPHSK63AST10200M	10	24	32	200	42	M8	1.65	M18*1
HSK63A	PGPHSK63AST12090M	12	24	32	90	47	M8	0.91	M18*1

转下页 see next page →

HSK63A DIN 69893

> 技术参数 | Technical parameters

单位 | Unit: mm

接口 Coupling	订货号 Ordering code	D1	D2	D3	L	A	过水顶丝 Back up screw	重量 m (kg)	水嘴 Nozzle
HSK63A	PGPHSK63AST12120M	12	24	32	120	47	M8	1.11	M18*1
HSK63A	PGPHSK63AST12130M	12	24	32	130	47	M8	1.17	M18*1
HSK63A	PGPHSK63AST12160M	12	24	32	160	47	M8	1.40	M18*1
HSK63A	PGPHSK63AST12200M	12	24	32	200	47	M8	1.64	M18*1
HSK63A	PGPHSK63AST14090M	14	27	34	90	47	M10	0.95	M18*1
HSK63A	PGPHSK63AST14120M	14	27	34	120	47	M10	1.17	M18*1
HSK63A	PGPHSK63AST14130M	14	27	34	130	47	M10	1.24	M18*1
HSK63A	PGPHSK63AST14160M	14	27	34	160	47	M10	1.50	M18*1
HSK63A	PGPHSK63AST14200M	14	27	34	200	47	M10	1.77	M18*1
HSK63A	PGPHSK63AST16095M	16	27	34	95	50	M12	0.96	M18*1
HSK63A	PGPHSK63AST16120M	16	27	34	120	50	M12	1.14	M18*1
HSK63A	PGPHSK63AST16130M	16	27	34	130	50	M12	1.21	M18*1
HSK63A	PGPHSK63AST16160M	16	27	34	160	50	M12	1.47	M18*1
HSK63A	PGPHSK63AST16200M	16	27	34	200	50	M12	1.74	M18*1
HSK63A	PGPHSK63AST18095M	18	33	42	95	50	M12	1.13	M18*1
HSK63A	PGPHSK63AST18120M	18	33	42	120	50	M12	1.40	M18*1
HSK63A	PGPHSK63AST18130M	18	33	42	130	50	M12	1.50	M18*1
HSK63A	PGPHSK63AST18160M	18	33	42	160	50	M12	1.82	M18*1
HSK63A	PGPHSK63AST18200M	18	33	42	200	50	M12	2.25	M18*1
HSK63A	PGPHSK63AST20100M	20	33	42	100	52	M12	1.10	M18*1
HSK63A	PGPHSK63AST20120M	20	33	42	120	52	M12	1.37	M18*1
HSK63A	PGPHSK63AST20130M	20	33	42	130	52	M12	1.47	M18*1
HSK63A	PGPHSK63AST20160M	20	33	42	160	52	M12	1.79	M18*1
HSK63A	PGPHSK63AST20200M	20	33	42	200	52	M12	2.22	M18*1
HSK63A	PGPHSK63AST25115M	25	44	53	115	58	M16	1.73	M18*1
HSK63A	PGPHSK63AST25130M	25	44	53	130	58	M16	1.98	M18*1
HSK63A	PGPHSK63AST25160M	25	44	53	160	58	M16	2.49	M18*1
HSK63A	PGPHSK63AST25200M	25	44	53	200	58	M16	3.16	M18*1
HSK63A	PGPHSK63AST32120M	32	44	53	120	58	M16	1.65	M18*1
HSK63A	PGPHSK63AST32160M	32	44	53	160	58	M16	2.33	M18*1
HSK63A	PGPHSK63AST32200M	32	44	53	200	58	M16	3.00	M18*1

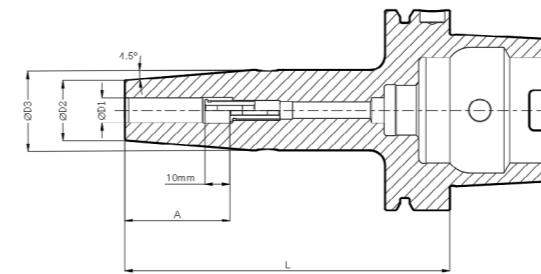
¹ 无过水顶丝，只适用于硬质合金刀具，A 尺寸为最小夹持深度

- 刀具柄部公差等级 h6，用于高速钢和硬质合金刀具
- 如需单独订购水嘴，请参照 29 页

¹ Without back up screw, suitable solid carbide tools, A is the minimum clamping depth

- Tolerance class of tool shank: h6, for HSS and solid carbide tools
- Nozzle need to be ordered seperately, please refer to P29

HSK80A DIN 69893



- 跳动精度 < 0.003mm
- 转速为 25,000rpm 时，平衡质量等级达到 G2.5 或 Umax < 1 g·mm
- 带轴向长度调节

- Runout < 0.003mm
- Balancing Grade: G2.5 at 25,000 rpm or Umax < 1 g·mm
- With adjustable axial length

> 技术参数 | Technical parameters

单位 | Unit: mm

接口 Coupling	订货号 Ordering code	D1	D2	D3	L	A	过水顶丝 Back up screw	重量 m (kg)	水嘴 Nozzle
HSK80A	PGPHSK80AST06085M	6	21	27	85	36	M5	1.24	M20*1.5
HSK80A	PGPHSK80AST06120M	6	21	27	120	36	M5	1.46	M20*1.5
HSK80A	PGPHSK80AST06130M	6	21	27	130	36	M5	1.51	M20*1.5
HSK80A	PGPHSK80AST06160M	6	21	27	160	36	M5	1.73	M20*1.5
HSK80A	PGPHSK80AST06200M	6	21	27	200	36	M5	1.90	M20*1.5
HSK80A	PGPHSK80AST08085M	8	21	27	85	36	M6	1.23	M20*1.5
HSK80A	PGPHSK80AST08120M	8	21	27	120	36	M6	1.45	M20*1.5
HSK80A	PGPHSK80AST08130M	8	21	27	130	36	M6	1.50	M20*1.5
HSK80A	PGPHSK80AST08160M	8	21	27	160	36	M6	1.72	M20*1.5
HSK80A	PGPHSK80AST08200M	8	21	27	200	36	M6	1.89	M20*1.5
HSK80A	PGPHSK80AST10090M	10	24	32	90	42	M8	1.31	M20*1.5
HSK80A	PGPHSK80AST10120M	10	24	32	120	42	M8	1.58	M20*1.5
HSK80A	PGPHSK80AST10130M	10	24	32	130	42	M8	1.64	M20*1.5
HSK80A	PGPHSK80AST10160M	10	24	32	160	42	M8	1.89	M20*1.5
HSK80A	PGPHSK80AST10200M	10	24	32	200	42	M8	2.17	M20*1.5
HSK80A	PGPHSK80AST12095M	12	24	32	95	47	M8	1.33	M20*1.5
HSK80A	PGPHSK80AST12120M	12	24	32	120	47	M8	1.57	M20*1.5
HSK80A	PGPHSK80AST12130M	12	24	32	130	47	M8	1.63	M20*1.5
HSK80A	PGPHSK80AST12160M	12	24	32	160	47	M8	1.88	M20*1.5
HSK80A	PGPHSK80AST12200M	12	24	32	200	47	M8	2.16	M20*1.5
HSK80A	PGPHSK80AST14095M	14	27	34	95	47	M10	1.38	M20*1.5
HSK80A	PGPHSK80AST14120M	14	27	34	120	47	M10	1.64	M20*1.5

转下页 see next page →

HSK80A DIN 69893

> 技术参数 | Technical parameters

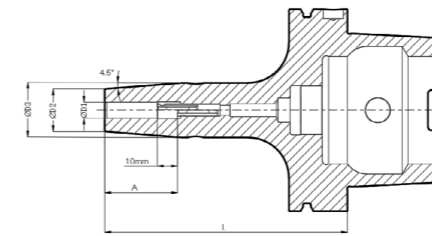
单位 | Unit: mm

接口 Coupling	订货号 Ordering code	D1	D2	D3	L	A	过水顶丝 Back up screw	重量 m (kg)	水嘴 Nozzle
HSK80A	PGPHSK80AST14130M	14	27	34	130	47	M10	1.70	M20*1.5
HSK80A	PGPHSK80AST14160M	14	27	34	160	47	M10	1.96	M20*1.5
HSK80A	PGPHSK80AST14200M	14	27	34	200	47	M10	2.30	M20*1.5
HSK80A	PGPHSK80AST16100M	16	27	34	100	50	M12	1.38	M20*1.5
HSK80A	PGPHSK80AST16120M	16	27	34	120	50	M12	1.61	M20*1.5
HSK80A	PGPHSK80AST16130M	16	27	34	130	50	M12	1.67	M20*1.5
HSK80A	PGPHSK80AST16160M	16	27	34	160	50	M12	1.93	M20*1.5
HSK80A	PGPHSK80AST16200M	16	27	34	200	50	M12	2.27	M20*1.5
HSK80A	PGPHSK80AST18100M	18	33	42	100	50	M12	1.56	M20*1.5
HSK80A	PGPHSK80AST18120M	18	33	42	120	50	M12	1.88	M20*1.5
HSK80A	PGPHSK80AST18130M	18	33	42	130	50	M12	1.99	M20*1.5
HSK80A	PGPHSK80AST18160M	18	33	42	160	50	M12	2.29	M20*1.5
HSK80A	PGPHSK80AST18200M	18	33	42	200	50	M12	2.71	M20*1.5
HSK80A	PGPHSK80AST20105M	20	33	42	105	52	M12	1.59	M20*1.5
HSK80A	PGPHSK80AST20120M	20	33	42	120	52	M12	1.86	M20*1.5
HSK80A	PGPHSK80AST20130M	20	33	42	130	52	M12	1.97	M20*1.5
HSK80A	PGPHSK80AST20160M	20	33	42	160	52	M12	2.27	M20*1.5
HSK80A	PGPHSK80AST20200M	20	33	42	200	52	M12	2.69	M20*1.5
HSK80A	PGPHSK80AST25115M	25	44	53	115	58	M16	1.93	M20*1.5
HSK80A	PGPHSK80AST25120M	25	44	53	120	58	M16	2.21	M20*1.5
HSK80A	PGPHSK80AST25130M	25	44	53	130	58	M16	2.42	M20*1.5
HSK80A	PGPHSK80AST25160M	25	44	53	160	58	M16	2.93	M20*1.5
HSK80A	PGPHSK80AST25200M	25	44	53	200	58	M16	3.61	M20*1.5
HSK80A	PGPHSK80AST32120M	32	44	53	120	58	M16	2.05	M20*1.5
HSK80A	PGPHSK80AST32130M	32	44	53	130	58	M16	2.25	M20*1.5
HSK80A	PGPHSK80AST32160M	32	44	53	160	58	M16	2.77	M20*1.5
HSK80A	PGPHSK80AST32200M	32	44	53	200	58	M16	3.45	M20*1.5

- 刀具柄部公差等级 h6, 用于高速钢和硬质合金刀具
- 如需单独订购水嘴, 请参照 29 页

- Tolerance class of tool shank: h6, for HSS and solid carbide tools
- Nozzle need to be ordered seperately, please refer to P29

HSK100A DIN 69893



- 跳动精度 < 0.003mm
- 转速为 25,000rpm 时, 平衡质量等级达到 G2.5 或 Umax < 1 g·mm
- 带轴向长度调节

- Runout < 0.003mm
- Balancing Grade: G2.5 at 25,000 rpm or Umax < 1 g·mm
- With adjustable axial length

> 技术参数 | Technical parameters

单位 | Unit: mm

接口 Coupling	订货号 Ordering code	D1	D2	D3	L	A	过水顶丝 Back up screw	重量 m (kg)	水嘴 Nozzle
HSK100A	PGPHSK100AST06085M	6	21	27	85	36	M5	2.17	M24*1.5
HSK100A	PGPHSK100AST06120M	6	21	27	120	36	M5	2.39	M24*1.5
HSK100A	PGPHSK100AST06130M	6	21	27	130	36	M5	2.44	M24*1.5
HSK100A	PGPHSK100AST06160M	6	21	27	160	36	M5	2.73	M24*1.5
HSK100A	PGPHSK100AST06200M	6	21	27	200	36	M5	2.9	M24*1.5
HSK100A	PGPHSK100AST08085M	8	21	27	85	36	M6	2.16	M24*1.5
HSK100A	PGPHSK100AST08120M	8	21	27	120	36	M6	2.38	M24*1.5
HSK100A	PGPHSK100AST08130M	8	21	27	130	36	M6	2.43	M24*1.5
HSK100A	PGPHSK100AST08160M	8	21	27	160	36	M6	2.72	M24*1.5
HSK100A	PGPHSK100AST08200M	8	21	27	200	36	M6	2.89	M24*1.5
HSK100A	PGPHSK100AST10090M	10	24	32	90	42	M8	2.24	M24*1.5
HSK100A	PGPHSK100AST10120M	10	24	32	120	42	M8	2.51	M24*1.5
HSK100A	PGPHSK100AST10130M	10	24	32	130	42	M8	2.57	M24*1.5
HSK100A	PGPHSK100AST10160M	10	24	32	160	42	M8	2.94	M24*1.5
HSK100A	PGPHSK100AST10200M	10	24	32	200	42	M8	3.18	M24*1.5
HSK100A	PGPHSK100AST12095M	12	24	32	95	47	M8	2.26	M24*1.5
HSK100A	PGPHSK100AST12120M	12	24	32	120	47	M8	2.50	M24*1.5
HSK100A	PGPHSK100AST12130M	12	24	32	130	47	M8	2.56	M24*1.5
HSK100A	PGPHSK100AST12160M	12	24	32	160	47	M8	2.93	M24*1.5
HSK100A	PGPHSK100AST12200M	12	24	32	200	47	M8	3.17	M24*1.5
HSK100A	PGPHSK100AST14095M	14	27	34	95	47	M10	2.31	M24*1.5
HSK100A	PGPHSK100AST14120M	14	27	34	120	47	M10	2.57	M24*1.5

转下页 see next page →

HSK100A DIN 69893

> 技术参数 | Technical parameters

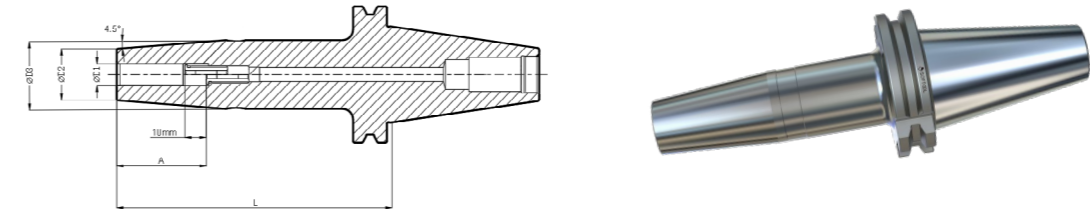
单位 | Unit: mm

接口 Coupling	订货号 Ordering code	D1	D2	D3	L	A	过水顶丝 Back up screw	重量 m (kg)	水嘴 Nozzle
HSK100A	PGPHSK100AST14130M	14	27	34	130	47	M10	2.63	M24*1.5
HSK100A	PGPHSK100AST14160M	14	27	34	160	47	M10	3.04	M24*1.5
HSK100A	PGPHSK100AST14200M	14	27	34	200	47	M10	3.31	M24*1.5
HSK100A	PGPHSK100AST16100M	16	27	34	100	50	M12	2.31	M24*1.5
HSK100A	PGPHSK100AST16120M	16	27	34	120	50	M12	2.54	M24*1.5
HSK100A	PGPHSK100AST16130M	16	27	34	130	50	M12	2.60	M24*1.5
HSK100A	PGPHSK100AST16160M	16	27	34	160	50	M12	3.01	M24*1.5
HSK100A	PGPHSK100AST16200M	16	27	34	200	50	M12	3.29	M24*1.5
HSK100A	PGPHSK100AST18100M	18	33	42	100	50	M12	2.49	M24*1.5
HSK100A	PGPHSK100AST18120M	18	33	42	120	50	M12	2.81	M24*1.5
HSK100A	PGPHSK100AST18130M	18	33	42	130	50	M12	2.92	M24*1.5
HSK100A	PGPHSK100AST18160M	18	33	42	160	50	M12	3.29	M24*1.5
HSK100A	PGPHSK100AST18200M	18	33	42	200	50	M12	3.71	M24*1.5
HSK100A	PGPHSK100AST20105M	20	33	42	105	52	M12	2.52	M24*1.5
HSK100A	PGPHSK100AST20120M	20	33	42	120	52	M12	2.79	M24*1.5
HSK100A	PGPHSK100AST20130M	20	33	42	130	52	M12	2.90	M24*1.5
HSK100A	PGPHSK100AST20160M	20	33	42	160	52	M12	3.26	M24*1.5
HSK100A	PGPHSK100AST20200M	20	33	42	200	52	M12	3.68	M24*1.5
HSK100A	PGPHSK100AST25115M	25	44	53	115	58	M16	3.03	M24*1.5
HSK100A	PGPHSK100AST25120M	25	44	53	120	58	M16	3.14	M24*1.5
HSK100A	PGPHSK100AST25130M	25	44	53	130	58	M16	3.35	M24*1.5
HSK100A	PGPHSK100AST25160M	25	44	53	160	58	M16	3.86	M24*1.5
HSK100A	PGPHSK100AST25200M	25	44	53	200	58	M16	4.54	M24*1.5
HSK100A	PGPHSK100AST32120M	32	44	53	120	58	M16	2.98	M24*1.5
HSK100A	PGPHSK100AST32130M	32	44	53	130	58	M16	3.19	M24*1.5
HSK100A	PGPHSK100AST32160M	32	44	53	160	58	M16	3.70	M24*1.5
HSK100A	PGPHSK100AST32200M	32	44	53	200	58	M16	4.37	M24*1.5

- 刀具柄部公差等级 h6, 用于高速钢和硬质合金刀具
- 如需单独订购水嘴, 请参照 29 页

- Tolerance class of tool shank: h6, for HSS and solid carbide tools
- Nozzle need to be ordered seperately, please refer to P29

SK40A DIN 69871



- 跳动精度 < 0.003mm
- 转速为 25,000rpm 时, 平衡质量等级达到 G2.5 或 Umax < 1g·mm
- 带轴向长度调节

- Runout < 0.003mm
- Balancing Grade: G2.5 at 25,000 rpm or Umax < 1 g·mm
- With adjustable axial length

> 技术参数 | Technical parameters

单位 | Unit: mm

接口 Coupling	订货号 Ordering code	D1	D2	D3	L	A	过水顶丝 Back up screw	重量 m (kg)
SK40A	PGPSK40AST03080M ¹	3	10	-	80	9.5	-	0.89
SK40A	PGPSK40AST03120M ¹	3	10	-	120	9.5	-	1.01
SK40A	PGPSK40AST03130M ¹	3	10	-	130	9.5	-	1.05
SK40A	PGPSK40AST04080M ¹	4	10	-	80	12	-	0.89
SK40A	PGPSK40AST04120M ¹	4	10	-	120	12	-	1.01
SK40A	PGPSK40AST04130M ¹	4	10	-	130	12	-	1.05
SK40A	PGPSK40AST06080M	6	21	27	80	36	M5	1.03
SK40A	PGPSK40AST06120M	6	21	27	120	36	M5	1.21
SK40A	PGPSK40AST06130M	6	21	27	130	36	M5	1.25
SK40A	PGPSK40AST06160M	6	21	27	160	36	M5	1.47
SK40A	PGPSK40AST06200M	6	21	27	200	36	M5	1.64
SK40A	PGPSK40AST08080M	8	21	27	80	36	M6	1.03
SK40A	PGPSK40AST08120M	8	21	27	120	36	M6	1.21
SK40A	PGPSK40AST08130M	8	21	27	130	36	M6	1.25
SK40A	PGPSK40AST08160M	8	21	27	160	36	M6	1.47
SK40A	PGPSK40AST08200M	8	21	27	200	36	M6	1.64
SK40A	PGPSK40AST10080M	10	24	32	80	42	M8	1.08
SK40A	PGPSK40AST10120M	10	24	32	120	42	M8	1.33
SK40A	PGPSK40AST10130M	10	24	32	130	42	M8	1.39
SK40A	PGPSK40AST10160M	10	24	32	160	42	M8	1.63
SK40A	PGPSK40AST10200M	10	24	32	200	42	M8	1.87
SK40A	PGPSK40AST12080M	12	24	32	80	47	M8	1.07

转下页 see next page →

SK40A DIN 69871

> 技术参数 | Technical parameters

单位 | Unit: mm

接口 Coupling	订货号 Ordering code	D1	D2	D3	L	A	过水顶丝 Back up screw	重量 m (kg)
SK40A	PGPSK40AST12120M	12	24	32	120	47	M8	1.32
SK40A	PGPSK40AST12130M	12	24	32	130	47	M8	1.38
SK40A	PGPSK40AST12160M	12	24	32	160	47	M8	1.62
SK40A	PGPSK40AST12200M	12	24	32	200	47	M8	1.86
SK40A	PGPSK40AST14080M	14	27	34	80	47	M10	1.11
SK40A	PGPSK40AST14120M	14	27	34	120	47	M10	1.38
SK40A	PGPSK40AST14130M	14	27	34	130	47	M10	1.45
SK40A	PGPSK40AST14160M	14	27	34	160	47	M10	1.72
SK40A	PGPSK40AST14200M	14	27	34	200	47	M10	2.00
SK40A	PGPSK40AST16080M	16	27	34	80	50	M12	1.08
SK40A	PGPSK40AST16120M	16	27	34	120	50	M12	1.35
SK40A	PGPSK40AST16130M	16	27	34	130	50	M12	1.42
SK40A	PGPSK40AST16160M	16	27	34	160	50	M12	1.69
SK40A	PGPSK40AST16200M	16	27	34	200	50	M12	1.97
SK40A	PGPSK40AST18080M	18	33	42	80	50	M12	1.22
SK40A	PGPSK40AST18120M	18	33	42	120	50	M12	1.64
SK40A	PGPSK40AST18130M	18	33	42	130	50	M12	1.75
SK40A	PGPSK40AST18160M	18	33	42	160	50	M12	2.06
SK40A	PGPSK40AST18200M	18	33	42	200	50	M12	2.49
SK40A	PGPSK40AST20080M	20	33	42	80	52	M12	1.19
SK40A	PGPSK40AST20120M	20	33	42	120	52	M12	1.61
SK40A	PGPSK40AST20130M	20	33	42	130	52	M12	1.72
SK40A	PGPSK40AST20160M	20	33	42	160	52	M12	2.03
SK40A	PGPSK40AST20200M	20	33	42	200	52	M12	2.46
SK40A	PGPSK40AST25100M	25	44	53	100	58	M16	1.73
SK40A	PGPSK40AST25120M	25	44	53	120	58	M16	2.07
SK40A	PGPSK40AST25130M	25	44	53	130	58	M16	2.24
SK40A	PGPSK40AST25160M	25	44	53	160	58	M16	2.75
SK40A	PGPSK40AST25200M	25	44	53	200	58	M16	3.42
SK40A	PGPSK40AST32100M	32	44	53	100	58	M16	1.70
SK40A	PGPSK40AST32120M	32	44	53	120	58	M16	2.04
SK40A	PGPSK40AST32130M	32	44	53	130	58	M16	2.21

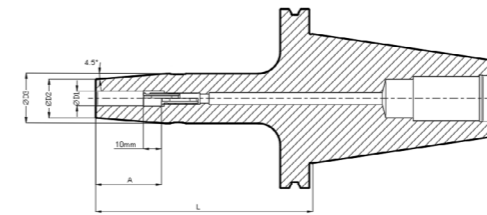
¹ 无过水顶丝，只适用于硬质合金刀具，A尺寸为最小夹持深度

• 刀具柄部公差等级 h6，用于高速钢和硬质合金刀具

¹ Without back up screw, suitable solid carbide tools, A is the minimum clamping depth

• Tolerance class of tool shank: h6, for HSS and solid carbide tools

SK50A DIN 69871



- 跳动精度 < 0.003mm
- 转速为 25,000rpm 时，平衡质量等级达到 G2.5 或 Umax < 1 g·mm
- 带轴向长度调节

- Runout < 0.003mm
- Balancing Grade: G2.5 at 25,000 rpm or Umax < 1 g·mm
- With adjustable axial length

> 技术参数 | Technical parameters

单位 | Unit: mm

接口 Coupling	订货号 Ordering code	D1	D2	D3	L	A	过水顶丝 Back up screw	重量 m (kg)
SK50A	PGPSK50AST06080M	6	21	27	80	36	M5	2.84
SK50A	PGPSK50AST06120M	6	21	27	120	36	M5	3.03
SK50A	PGPSK50AST06130M	6	21	27	130	36	M5	3.07
SK50A	PGPSK50AST06160M	6	21	27	160	36	M5	3.38
SK50A	PGPSK50AST06200M	6	21	27	200	36	M5	3.55
SK50A	PGPSK50AST08080M	8	21	27	80	36	M6	2.84
SK50A	PGPSK50AST08120M	8	21	27	120	36	M6	3.03
SK50A	PGPSK50AST08130M	8	21	27	130	36	M6	3.07
SK50A	PGPSK50AST08160M	8	21	27	160	36	M6	3.37
SK50A	PGPSK50AST08200M	8	21	27	200	36	M6	3.52
SK50A	PGPSK50AST10080M	10	24	32	80	42	M8	2.99
SK50A	PGPSK50AST10120M	10	24	32	120	42	M8	3.15
SK50A	PGPSK50AST10130M	10	24	32	130	42	M8	3.21
SK50A	PGPSK50AST10160M	10	24	32	160	42	M8	3.60
SK50A	PGPSK50AST10200M	10	24	32	200	42	M8	3.85
SK50A	PGPSK50AST12080M	12	24	32	80	47	M8	2.87
SK50A	PGPSK50AST12120M	12	24	32	120	47	M8	3.15
SK50A	PGPSK50AST12130M	12	24	32	130	47	M8	3.21
SK50A	PGPSK50AST12160M	12	24	32	160	47	M8	3.59
SK50A	PGPSK50AST12200M	12	24	32	200	47	M8	3.83
SK50A	PGPSK50AST14080M	14	27	34	80	47	M10	2.92
SK50A	PGPSK50AST14120M	14	27	34	120	47	M10	3.20

转下页 see next page →

SK50A DIN 69871

> 技术参数 | Technical parameters

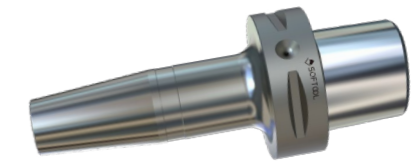
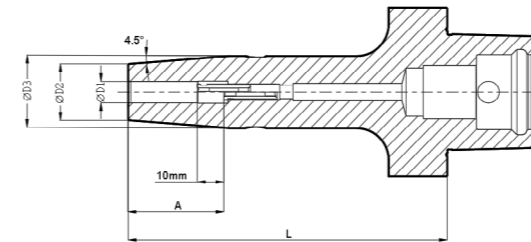
单位 | Unit: mm

接口 Coupling	订货号 Ordering code	D1	D2	D3	L	A	过水顶丝 Back up screw	重量 m (kg)
SK50A	PGPSK50AST14130M	14	27	34	130	47	M10	3.27
SK50A	PGPSK50AST14160M	14	27	34	160	47	M10	3.70
SK50A	PGPSK50AST14200M	14	27	34	200	47	M10	3.97
SK50A	PGPSK50AST16080M	16	27	34	80	50	M12	2.88
SK50A	PGPSK50AST16120M	16	27	34	120	50	M12	3.20
SK50A	PGPSK50AST16130M	16	27	34	130	50	M12	3.27
SK50A	PGPSK50AST16160M	16	27	34	160	50	M12	3.67
SK50A	PGPSK50AST16200M	16	27	34	200	50	M12	3.95
SK50A	PGPSK50AST18080M	18	33	42	80	50	M12	3.04
SK50A	PGPSK50AST18120M	18	33	42	120	50	M12	3.46
SK50A	PGPSK50AST18130M	18	33	42	130	50	M12	3.57
SK50A	PGPSK50AST18160M	18	33	42	160	50	M12	3.98
SK50A	PGPSK50AST18200M	18	33	42	200	50	M12	4.42
SK50A	PGPSK50AST20080M	20	33	42	80	52	M12	3.02
SK50A	PGPSK50AST20120M	20	33	42	120	52	M12	3.44
SK50A	PGPSK50AST20130M	20	33	42	130	52	M12	3.55
SK50A	PGPSK50AST20160M	20	33	42	160	52	M12	3.97
SK50A	PGPSK50AST20200M	20	33	42	200	52	M12	4.39
SK50A	PGPSK50AST25100M	25	44	53	100	58	M16	3.57
SK50A	PGPSK50AST25120M	25	44	53	120	58	M16	3.93
SK50A	PGPSK50AST25130M	25	44	53	130	58	M16	4.10
SK50A	PGPSK50AST25160M	25	44	53	160	58	M16	4.72
SK50A	PGPSK50AST25200M	25	44	53	200	58	M16	5.40
SK50A	PGPSK50AST32100M	32	44	53	100	58	M16	3.42
SK50A	PGPSK50AST32120M	32	44	53	120	58	M16	3.80
SK50A	PGPSK50AST32130M	32	44	53	130	58	M16	3.97
SK50A	PGPSK50AST32160M	32	44	53	160	58	M16	4.58
SK50A	PGPSK50AST32200M	32	44	53	200	58	M16	5.26

• 刀具柄部公差等级 h6，用于高速钢和硬质合金具

• Tolerance class of tool shank: h6, for HSS and solid carbide tools

PSC63 ISO 26623



- 跳动精度 < 0.003mm
- 转速为 25,000rpm 时，平衡质量等级达到 G2.5 或 Umax < 1g·mm
- 带轴向长度调节

- Runout < 0.003mm
- Balancing Grade: G2.5 at 25,000 rpm or Umax < 1 g·mm
- With adjustable axial length

> 技术参数 | Technical parameters

单位 | Unit: mm

接口 Coupling	订货号 Ordering code	D1	D2	D3	L	A	过水顶丝 Back up screw	重量 m (kg)
PSC63A	PGPPSC63AST03080M ¹	3	10	-	80	9.5	-	0.82
PSC63A	PGPPSC63AST03120M ¹	3	10	-	120	9.5	-	0.93
PSC63A	PGPPSC63AST03130M ¹	3	10	-	130	9.5	-	0.97
PSC63A	PGPPSC63AST04080M ¹	4	10	-	80	12	-	0.82
PSC63A	PGPPSC63AST04120M ¹	4	10	-	120	12	-	0.93
PSC63A	PGPPSC63AST04130M ¹	4	10	-	130	12	-	0.97
PSC63A	PGPPSC63AST06080M	6	21	27	80	36	M5	0.95
PSC63A	PGPPSC63AST06100M	6	21	27	100	36	M5	1.03
PSC63A	PGPPSC63AST06120M	6	21	27	120	36	M5	1.19
PSC63A	PGPPSC63AST06130M	6	21	27	130	36	M5	1.23
PSC63A	PGPPSC63AST06160M	6	21	27	160	36	M5	1.59
PSC63A	PGPPSC63AST08080M	8	21	27	80	36	M6	0.95
PSC63A	PGPPSC63AST08100M	8	21	27	100	36	M6	1.03
PSC63A	PGPPSC63AST08120M	8	21	27	120	36	M6	1.19
PSC63A	PGPPSC63AST08130M	8	21	27	130	36	M6	1.23
PSC63A	PGPPSC63AST08160M	8	21	27	160	36	M6	1.59
PSC63A	PGPPSC63AST10080M	10	24	32	80	42	M8	1.10
PSC63A	PGPPSC63AST10100M	10	24	32	100	42	M8	1.18
PSC63A	PGPPSC63AST10120M	10	24	32	120	42	M8	1.34
PSC63A	PGPPSC63AST10130M	10	24	32	130	42	M8	1.38
PSC63A	PGPPSC63AST10160M	10	24	32	160	42	M8	1.74
PSC63A	PGPPSC63AST12080M	12	24	32	80	47	M8	1.09

转下页 see next page →

PSC63A ISO26623

> 技术参数 | Technical parameters

单位 | Unit: mm

接口 Coupling	订货号 Ordering code	D1	D2	D3	L	A	过水顶丝 Back up screw	重量 m (kg)
PSC63A	PGPPSC63AST12100M	12	24	32	100	47	M8	1.17
PSC63A	PGPPSC63AST12120M	12	24	32	120	47	M8	1.33
PSC63A	PGPPSC63AST12130M	12	24	32	130	47	M8	1.37
PSC63A	PGPPSC63AST12160M	12	24	32	160	47	M8	1.73
PSC63A	PGPPSC63AST14085M	14	27	34	85	47	M10	1.25
PSC63A	PGPPSC63AST14100M	14	27	34	100	47	M10	1.33
PSC63A	PGPPSC63AST14120M	14	27	34	120	47	M10	1.49
PSC63A	PGPPSC63AST14130M	14	27	34	130	47	M10	1.53
PSC63A	PGPPSC63AST14160M	14	27	34	160	47	M10	1.89
PSC63A	PGPPSC63AST16085M	16	27	34	85	50	M12	1.22
PSC63A	PGPPSC63AST16100M	16	27	34	100	50	M12	1.30
PSC63A	PGPPSC63AST16120M	16	27	34	120	50	M12	1.46
PSC63A	PGPPSC63AST16130M	16	27	34	130	50	M12	1.50
PSC63A	PGPPSC63AST16160M	16	27	34	160	50	M12	1.86
PSC63A	PGPPSC63AST18085M	18	33	42	85	50	M12	1.19
PSC63A	PGPPSC63AST18100M	18	33	42	100	50	M12	1.33
PSC63A	PGPPSC63AST18130M	18	33	42	130	50	M12	1.71
PSC63A	PGPPSC63AST18160M	18	33	42	160	50	M12	1.97
PSC63A	PGPPSC63AST20085M	20	33	42	85	52	M12	1.16
PSC63A	PGPPSC63AST20100M	20	33	42	100	52	M12	1.30
PSC63A	PGPPSC63AST20120M	20	33	42	120	52	M12	1.58
PSC63A	PGPPSC63AST20130M	20	33	42	130	52	M12	1.68
PSC63A	PGPPSC63AST20160M	20	33	42	160	52	M12	1.94
PSC63A	PGPPSC63AST25090M	25	44	53	90	58	M16	1.50
PSC63A	PGPPSC63AST25120M	25	44	53	120	58	M16	2.01
PSC63A	PGPPSC63AST25130M	25	44	53	130	58	M16	2.19
PSC63A	PGPPSC63AST25160M	25	44	53	160	58	M16	2.74
PSC63A	PGPPSC63AST32095M	32	44	53	95	58	M16	1.43
PSC63A	PGPPSC63AST32130M	32	44	53	130	58	M16	2.02
PSC63A	PGPPSC63AST32160M	32	44	53	160	58	M16	2.58

¹ 无过水顶丝，只适用于硬质合金刀具，A尺寸为最小夹持深度

● 刀具柄部公差等级 h6，用于高速钢和硬质合金刀具

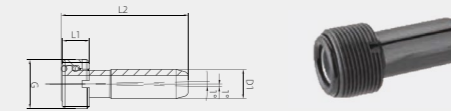
¹ Without back up screw, suitable solid carbide tools, A is the minimum clamping depth

● Tolerance class of tool shank: h6, for HSS and solid carbide tools

配件清单 List of Parts

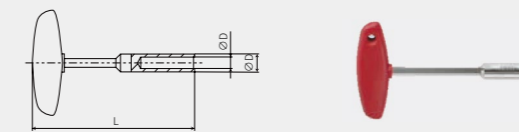
水嘴 | Nozzle

为 HSK 刀柄提供最佳的内部冷却液供给 | Provide optimal internal coolant supply for HSK chucks



订货号 Ordering code	适用 Apply	D1	L1	L2	G
731300560049	HSK25	6	4.5	24	M8*1
731300560051	HSK32	6	5.5	26	M10*1
731300560052	HSK40	8	7.5	29	M12*1
731300560053	HSK50	10	9.5	33	M16*1
731300560054	HSK63	12	11.5	36.5	M18*1
731300560055	HSK80	14	13.5	38.5	M20*1.5
731300560056	HSK100	16	15	43.5	M24*1.5

水嘴扳手 | Nozzle Key



订货号 Ordering code	适用 Apply	D	D2	L
720309000216	HSK25	5	7	105
720309000217	HSK32	6	9	107
731300560038	HSK40	8	11	111
731300560039	HSK50	10	15	120
731300560046	HSK63	12	17	122
731300560047	HSK80	14	18.5	126
731300560048	HSK100	16	22	141

📍 全国区域	Nationwide	☎ +86 186 2267 5164
📍 华北区域	North China Area	☎ +86 177 3160 2890
📍 华中区域	Central China Area	☎ +86 189 0210 1516
📍 东北区域	Northeast Area	☎ +86 133 3205 6691
📍 西南区域	Southwest Area	☎ +86 185 8392 0999
📍 华南区域	South China Area	☎ +86 153 3200 8595
📍 西北区域	Northwest Area	☎ +86 133 3201 8652
📍 山东区域	Shandong Area	☎ +86 189 2021 6828
📍 华东一区 (上海、浙江)	East China Area I (Shanghai, Zhejiang)	☎ +86 189 0219 0578
📍 华东二区 (江苏、安徽)	East China Area II (Jiangsu, Anhui)	☎ +86 188 6213 2921
📍 OEM&海外	OEM & Oversea Sales	☎ +86 131 1000 1570
📍 外贸销售	Export Sales	☎ +86 189 2008 0858



— 微信公众号 —

ADD: 天津市武清区京滨工业园京滨大道99号

No. 99, Jingbin Avenue, Jingbin Industrial Park,
Wuqing District, Tianjin, China

TEL: 022-60379917

E-mail: softtool.sale@cxtc.com

WEB: www.xtc-softtool.com